

architecture
passionately managed

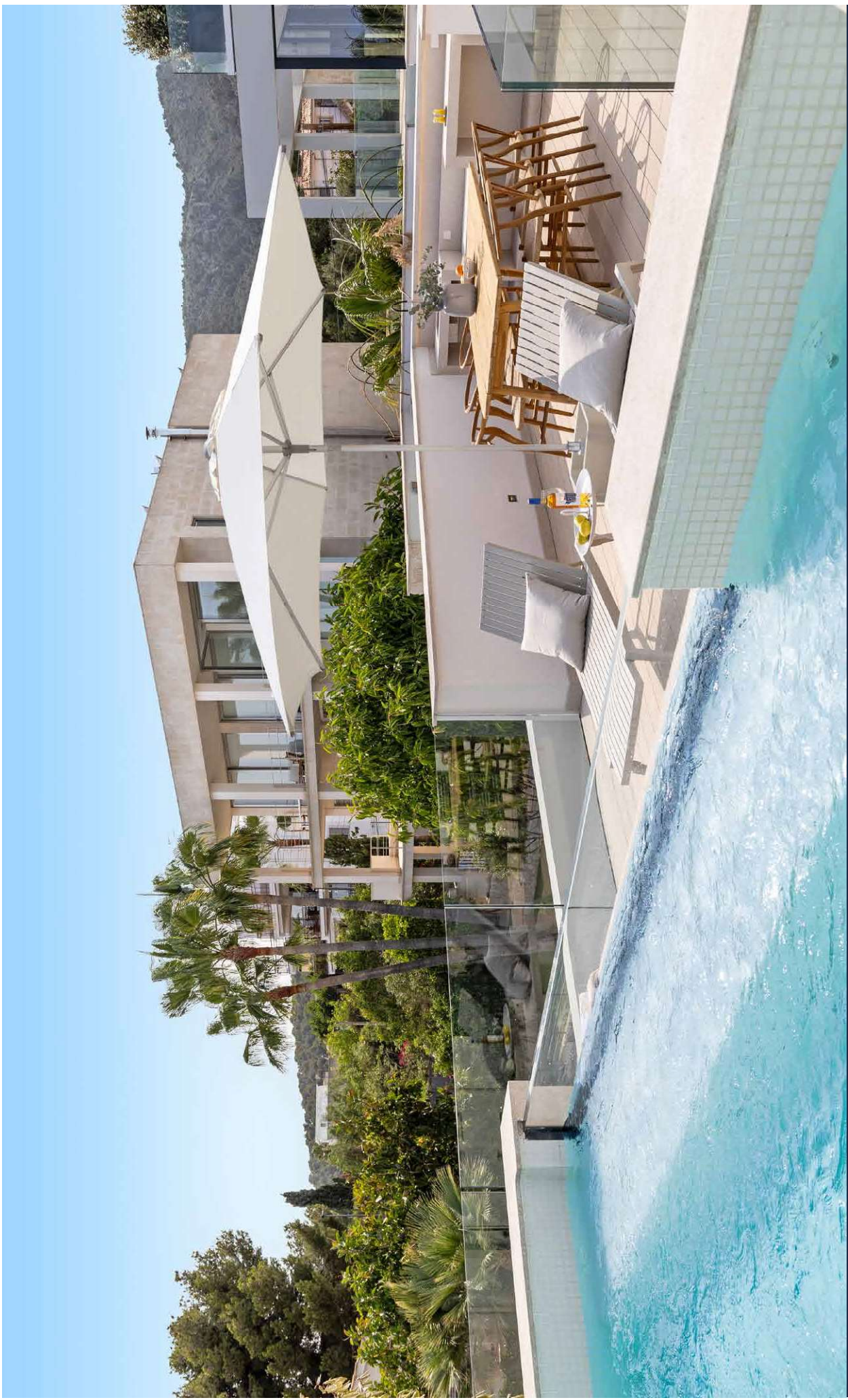
Sant Agustí, Palma

APM SUITES



Scan me to explore the location
Scan mich, um die Location zu erkunden





Penthouse



















Garden Apartments

RESERVED



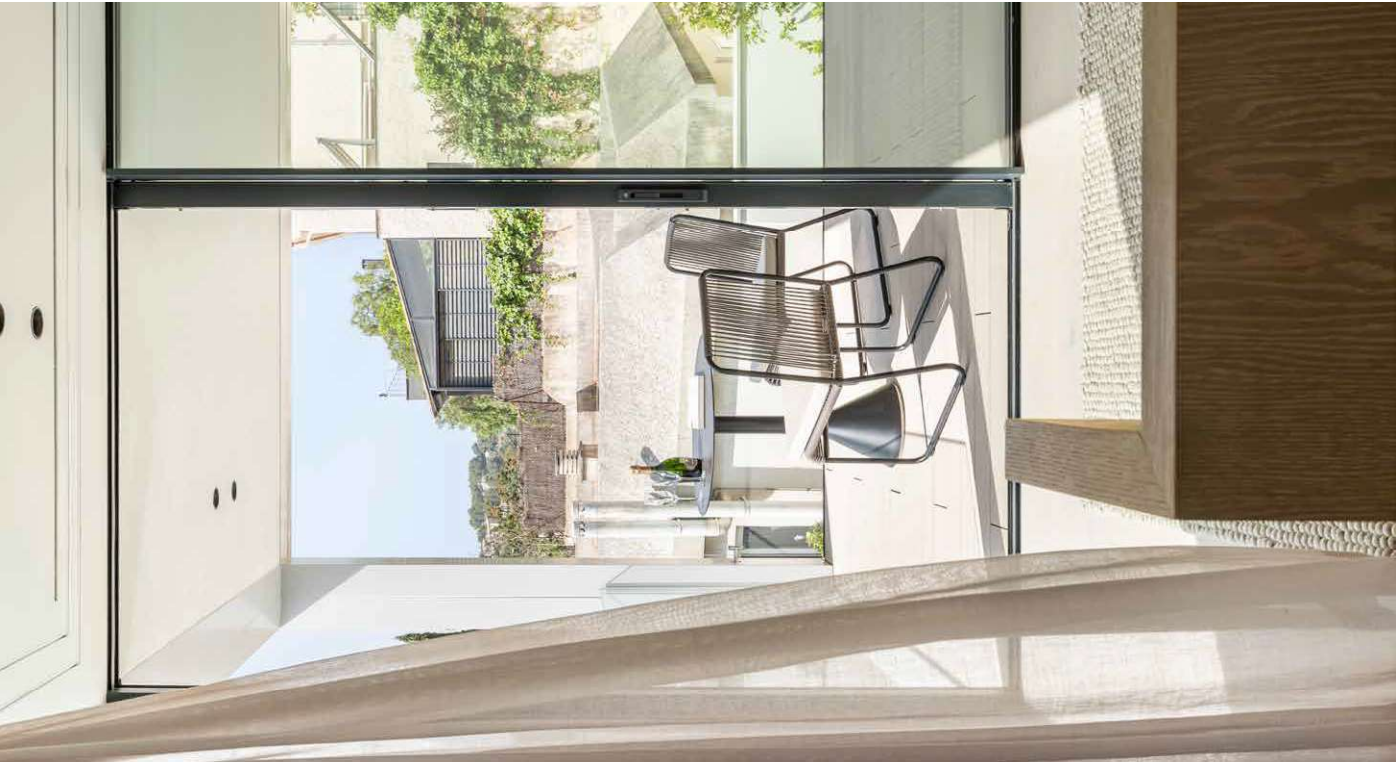




Modern yet cozy interiors



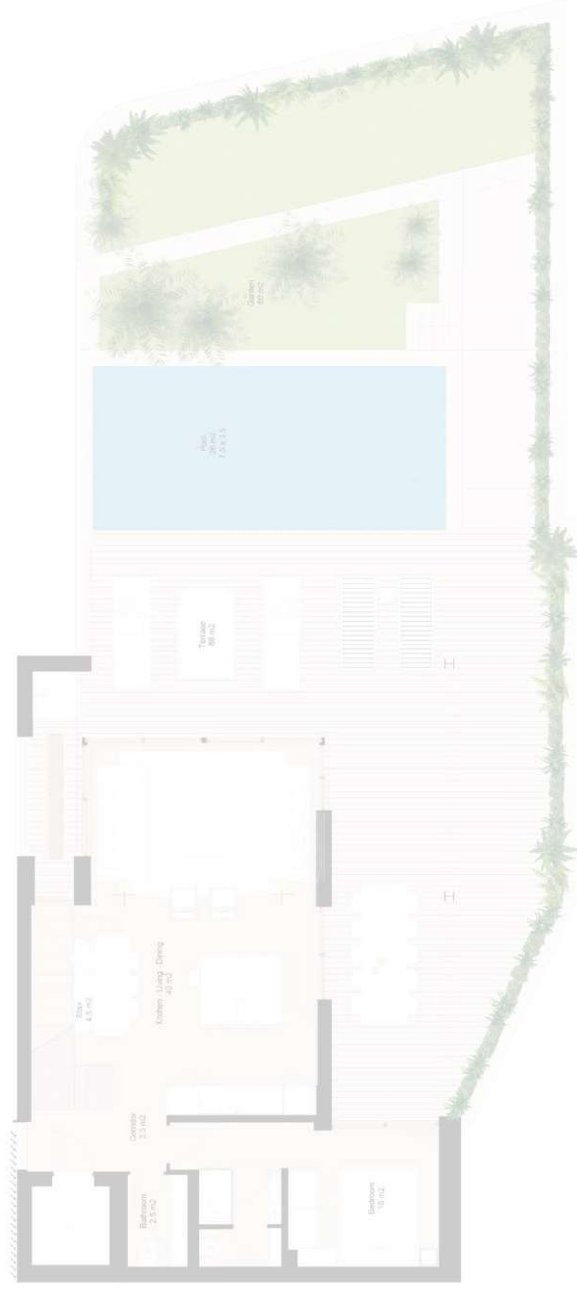






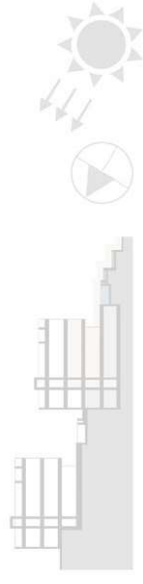
First floor

Erstes Obergeschoss



Ground floor

Erdgeschoss



Living area approx.

Wohnfläche ca.

125 m²

Terraces, garden, pool approx.

Terrassen, Garten und Pool ca.

100 m²

Bedrooms

Schlafzimmer

3

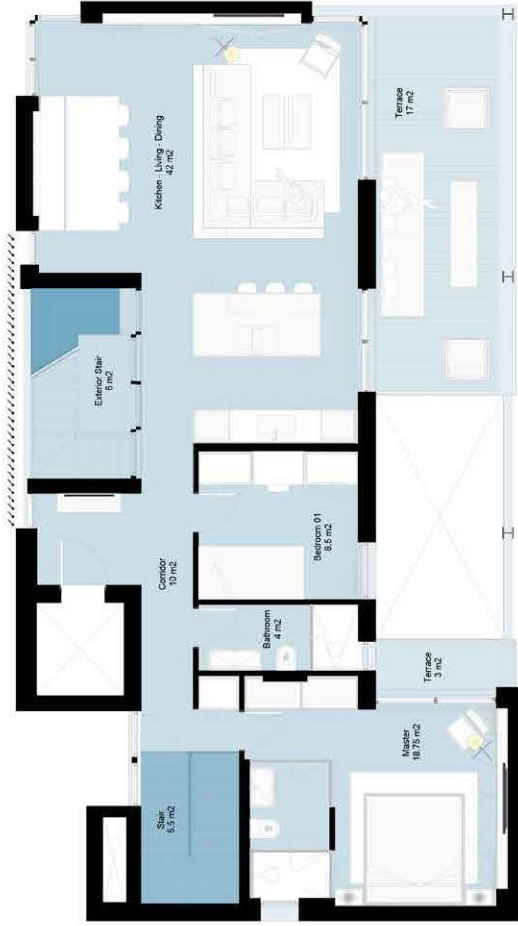
Bathrooms

Badezimmer

3 + 1

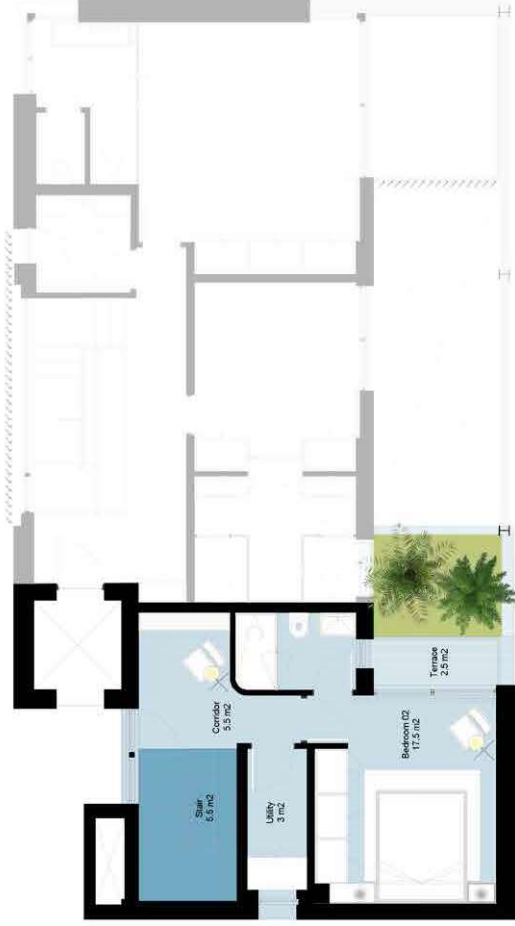
Duplex Garden Apartment
Maisonette Gartenapartment

APARTMENT 01 | SOLD



Second floor

Zweites Obergeschoss



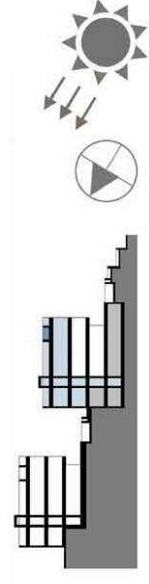
First floor

Erstes Obergeschoss



Roof terrace

Dachterrasse



Living area approx.

Wohnfläche ca.

125 m²

Terraces and pool approx.

Terrassen und Pool ca.

80 m²

Bedrooms

Schlafzimmer

3

Bathrooms

Badezimmer

3

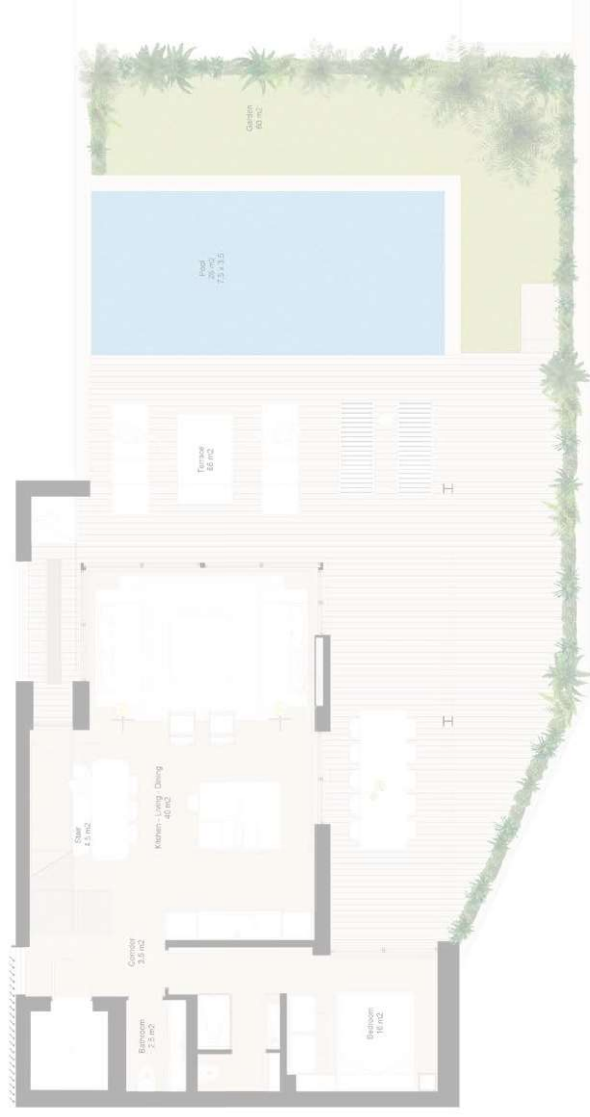
Duplex Penthouse
Maisonette Penthouse

APARTMENT 02



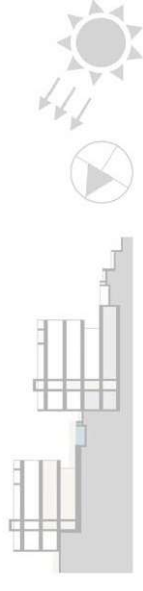
First floor

Erstes Obergeschoss



Ground floor

Erdgeschoss



Living area approx.

Wohnfläche ca.

125 m²

Terraces, garden and pool

Terrassen, Garten und Pool

100 m²

Bedrooms

Schlafzimmer

3

Bathrooms

Badezimmer

3 + 1

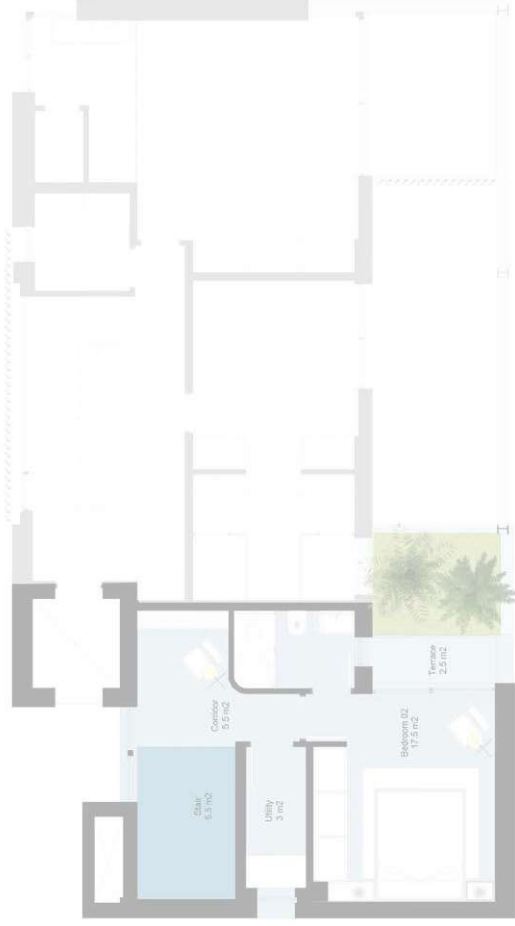
Duplex Garden Apartment
Maisonette Gartenapartment

APARTMENT 03 | SOLD



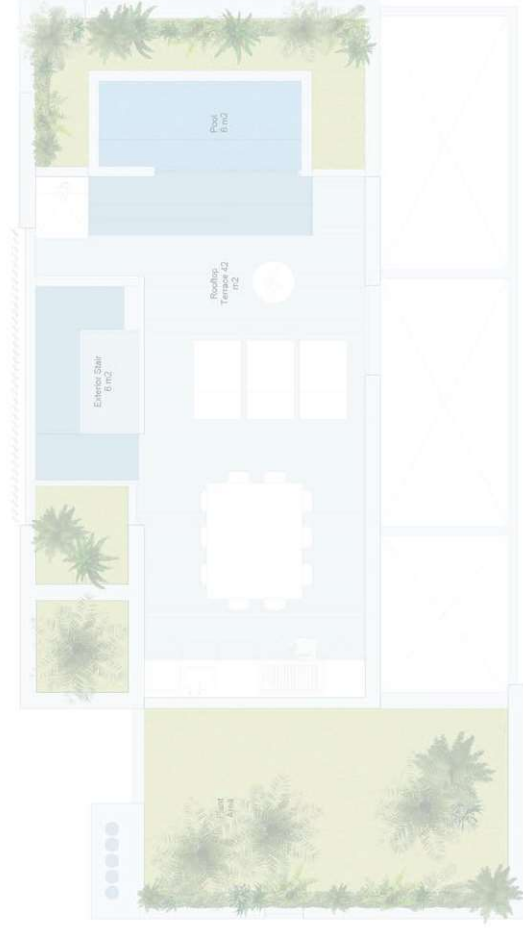
Second floor

Zweites Obergeschoss



First floor

Erstes Obergeschoss



Rooftop terrace

Dachterrasse

Living area approx.

Wohnfläche ca.

125 m²

Terraces and pool approx.

Terrassen und Pool ca.

80 m²

Bedrooms

Schlafzimmer

3

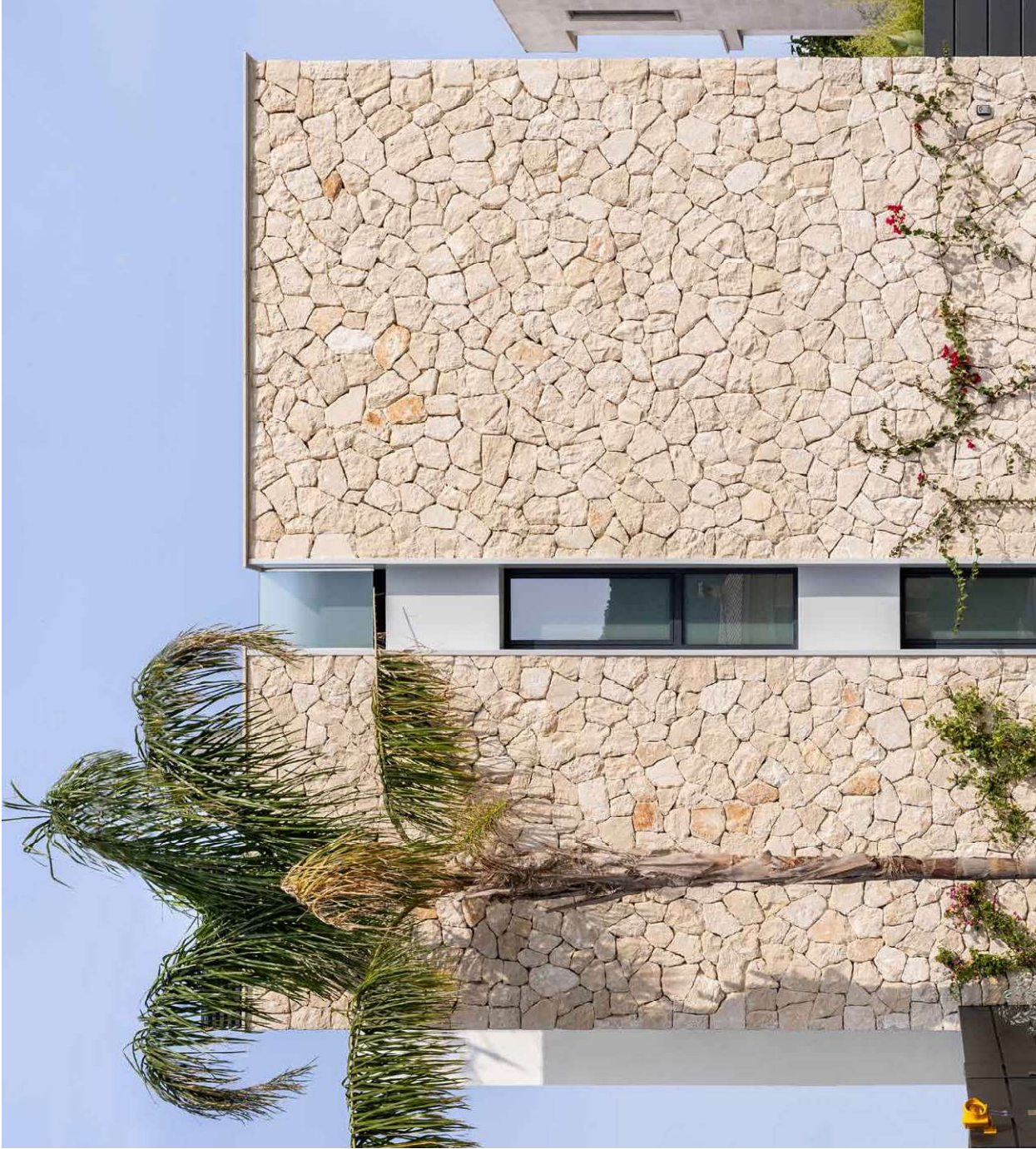
Bathrooms

Badezimmer

3

Duplex Penthouse
Maisonette Penthouse

APARTMENT 04 | SOLD



Apartment 01

SOLD

Apartment 02

incl. 2 parking space in
the underground parking

2,350,000 €

Apartment 03

SOLD

Apartment 04

SOLD