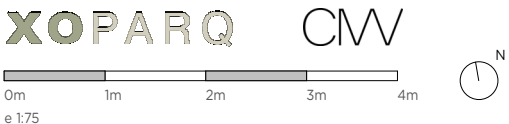


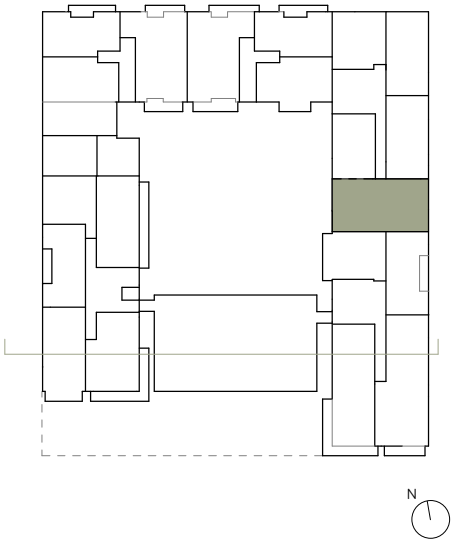
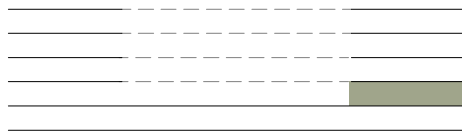
- KITCHEN
- WARDROBES
- SMART CONTROL
- PANORAMA WINDOWS
- SOLAR CONTROL GLASS
- COMMUNITY POOL
- COMMUNITY GYM
- SECURITY SYSTEM
- ART WALL
- BLINDS
- AC/HEATING
- (M) MOTORIZED WINDOW



DATE: 19/10/23

*This document is informative, it has not contractual value until the structure and installations are completely defined

****THIS DOCUMENT INCLUDING USABLE AREAS AND GROSS FLOOR AREAS IS ONLY TEMPORARY AND NOT FINAL DUE TO MUNICIPALY CHANGES AND CONSTRUCTION DESIGN**

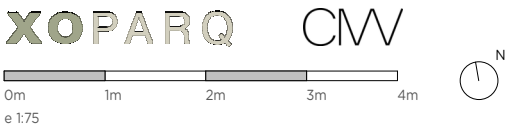


V.1J APARTMENT	
INDOOR USABLE FLOOR AREA	106.50
INDOOR GROSS FLOOR AREA	122.97
TERRACE	81.92
GROSS FLOOR AREA	204.89
GFA + COMMON AREAS	247.02

V.1J- USABLE FLOOR AREA	
ROOM	SURFACE
LIVING-DINING_KITCHEN	46.52
BEDROOM 1	18.11
BATHROOM 1	5.19
BEDROOM 2	12.00
BATHROOM 2	5.15
BEDROOM 3	12.64
BATHROOM 3	4.01
HALLWAY	2.88
TOTAL USABLE FLOOR AREA	106.50



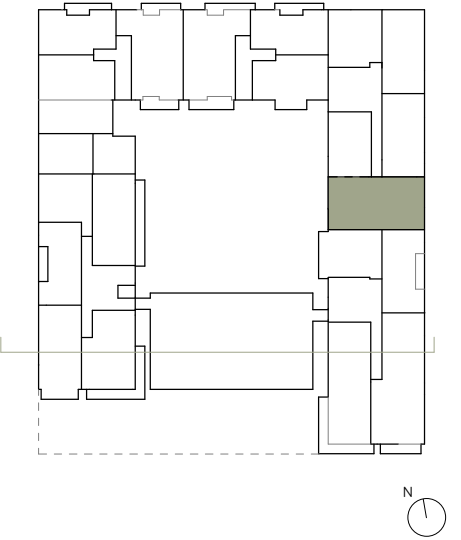
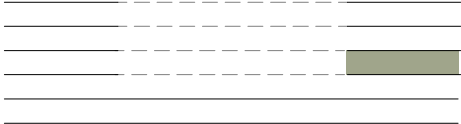
KITCHEN
WARDROBES
SMART CONTROL
PANORAMA WINDOWS
SOLAR CONTROL GLASS
COMMUNITY POOL
COMMUNITY GYM
SECURITY SYSTEM
ART WALL
BLINDS
AC/HEATING
(M) MOTORIZED WINDOW



DATE: 19/10/23

*This document is informative, it has not contractual value until the structure and installations are completely defined

****THIS DOCUMENT INCLUDING USABLE AREAS AND GROSS FLOOR AREAS IS ONLY TEMPORARY AND NOT FINAL DUE TO MUNICIPALY CHANGES AND CONSTRUCTION DESIGN**



V.1J APARTMENT	
INDOOR USABLE FLOOR AREA	106.50
INDOOR GROSS FLOOR AREA	122.97
TERRACE	81.92
GROSS FLOOR AREA	204.89
GFA + COMMON AREAS	247.02

V.1J- USABLE FLOOR AREA	
ROOM	SURFACE
LIVING-DINING_KITCHEN	46.52
BEDROOM 1	18.11
BATHROOM 1	5.19
BEDROOM 2	12.00
BATHROOM 2	5.15
BEDROOM 3	12.64
BATHROOM 3	4.01
HALLWAY	2.88
TOTAL USABLE FLOOR AREA	106.50