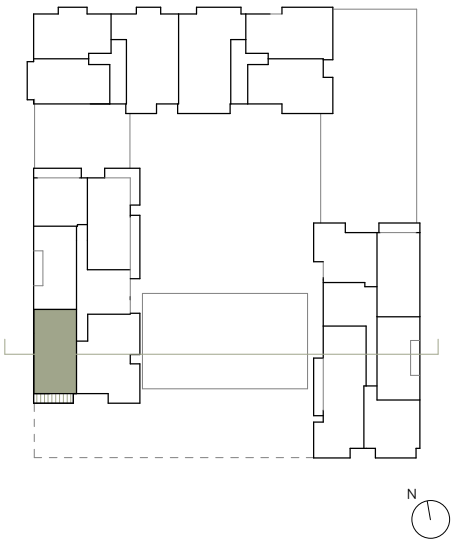
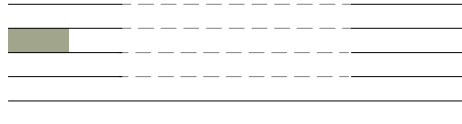
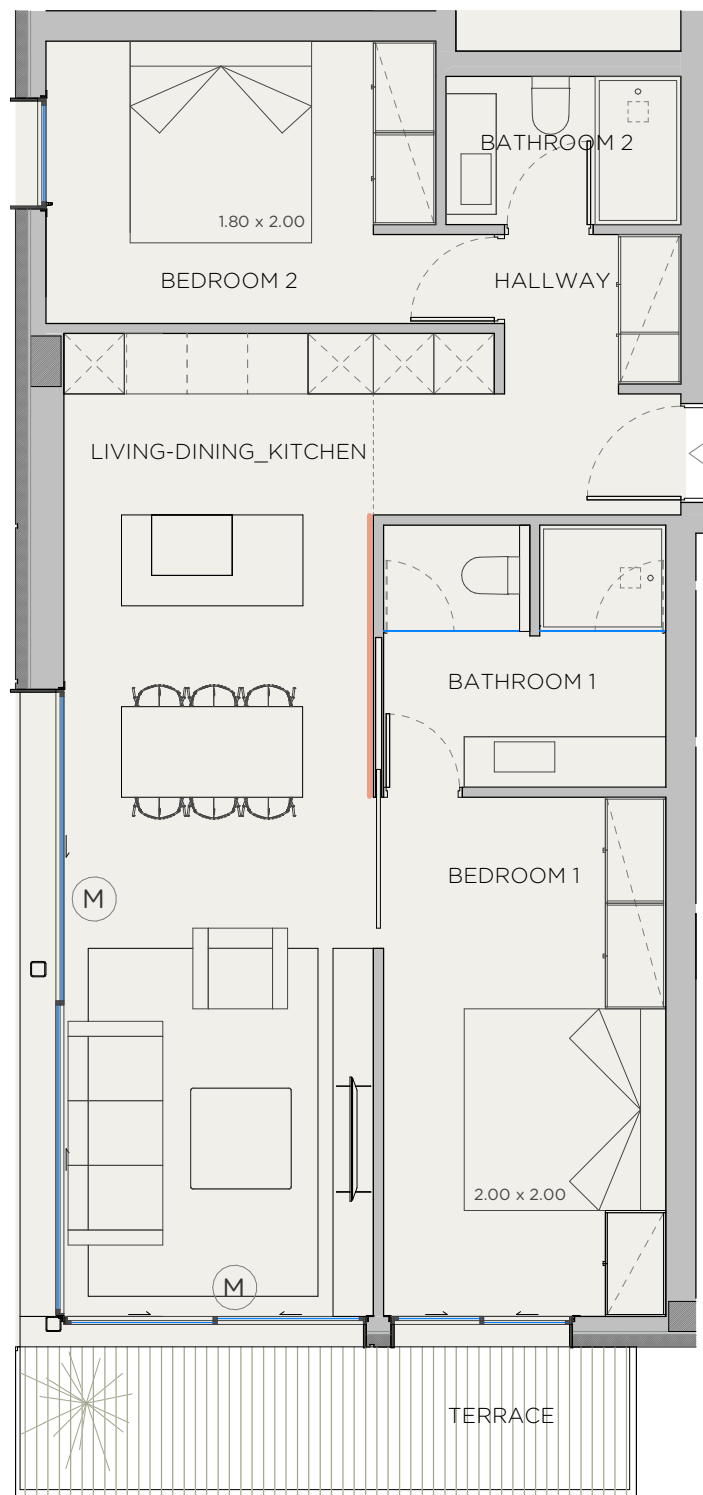


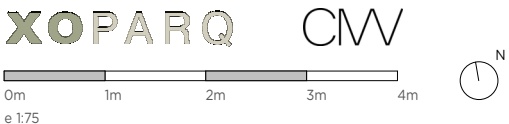
XOJAY



V.3R APARTMENT	
INDOOR USABLE FLOOR AREA	73.30
INDOOR GROSS FLOOR AREA	86.76
TERRACE	9.26
GROSS FLOOR AREA	96.02
GFA + COMMON AREAS	115.76

V.3R- USABLE FLOOR AREA	
ROOM	SURFACE
LIVING-DINING_KITCHEN	32.10
BEDROOM 1	14.42
BATHROOM 1	7.07
BEDROOM 2	11.37
BATHROOM 2	3.43
HALLWAY	4.92
TOTAL USABLE FLOOR AREA	73.30

- KITCHEN
- WARDROBES
- SMART CONTROL
- PANORAMA WINDOWS
- SOLAR CONTROL GLASS
- COMMUNITY POOL
- COMMUNITY GYM
- SECURITY SYSTEM
- ART WALL
- BLINDS
- AC/HEATING
- (M) MOTORIZED WINDOW



DATE: 19/10/23

\*This document is informative, it has not contractual value until the structure and installations are completely defined

**\*\*THIS DOCUMENT INCLUDING USABLE AREAS AND GROSS FLOOR AREAS IS ONLY TEMPORARY AND NOT FINAL DUE TO MUNICIPALY CHANGES AND CONSTRUCTION DESIGN**

XOPARQ

The Palma Residences

APARTMENT

3.R