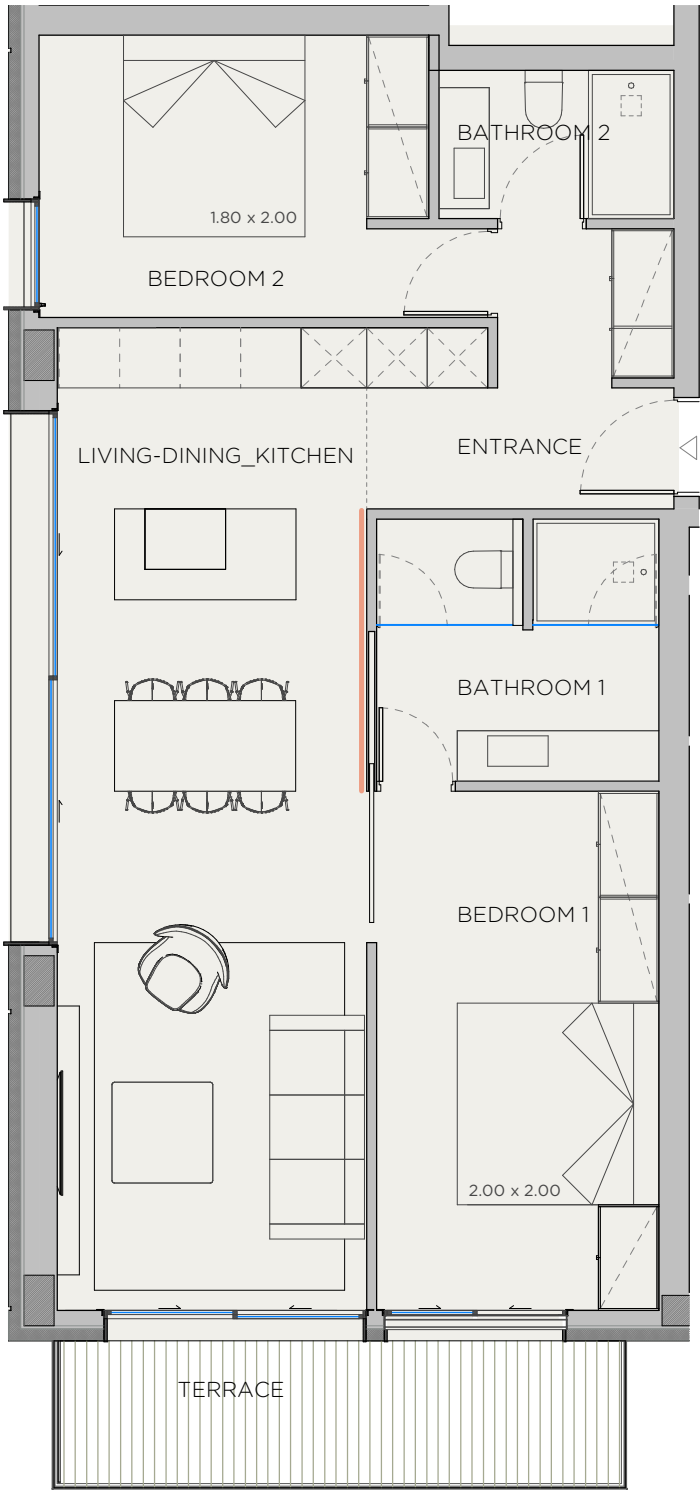
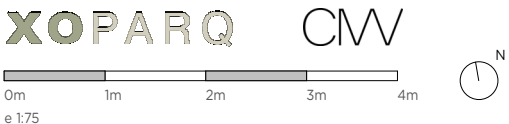


XOJAY



- KITCHEN
- WARDROBES
- SMART CONTROL
- PANORAMA WINDOWS
- SOLAR CONTROL GLASS
- COMMUNITY POOL
- COMMUNITY GYM
- SECURITY SYSTEM
- ART WALL
- BLINDS
- AC/HEATING
- (M) MOTORIZED WINDOW

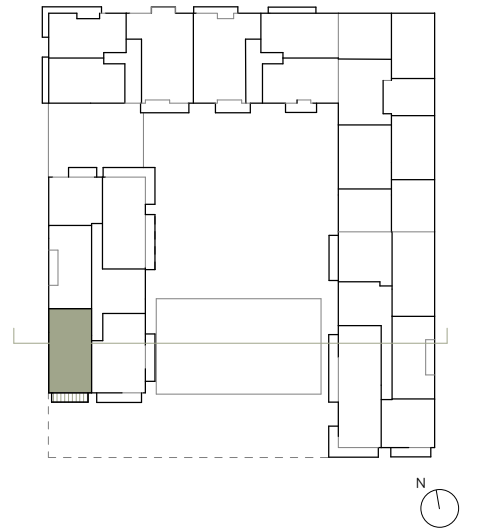
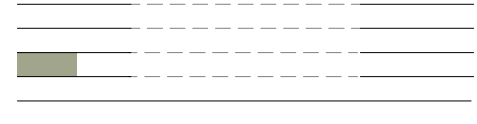


DATE: 19/10/23

*This document is informative, it has not contractual value until the structure and installations are completely defined

****THIS DOCUMENT INCLUDING USABLE AREAS AND GROSS FLOOR AREAS IS ONLY TEMPORARY AND NOT FINAL DUE TO MUNICIPALY CHANGES AND CONSTRUCTION DESIGN**

XOPARQ
The Palma Residences



V.2R APARTMENT	
INDOOR USABLE FLOOR AREA	73.30
INDOOR GROSS FLOOR AREA	86.78
TERRACE	8.27
GROSS FLOOR AREA	95.05
GFA + COMMON AREAS	114.59

V.2R- USABLE FLOOR AREA	
ROOM	SURFACE
LIVING-DINING_KITCHEN	32.10
BEDROOM 1	14.42
BATHROOM 1	7.07
BEDROOM 2	11.37
BATHROOM 2	3.43
ENTRANCE	4.92
TOTAL USABLE FLOOR AREA	73.30

APARTMENT

2.R