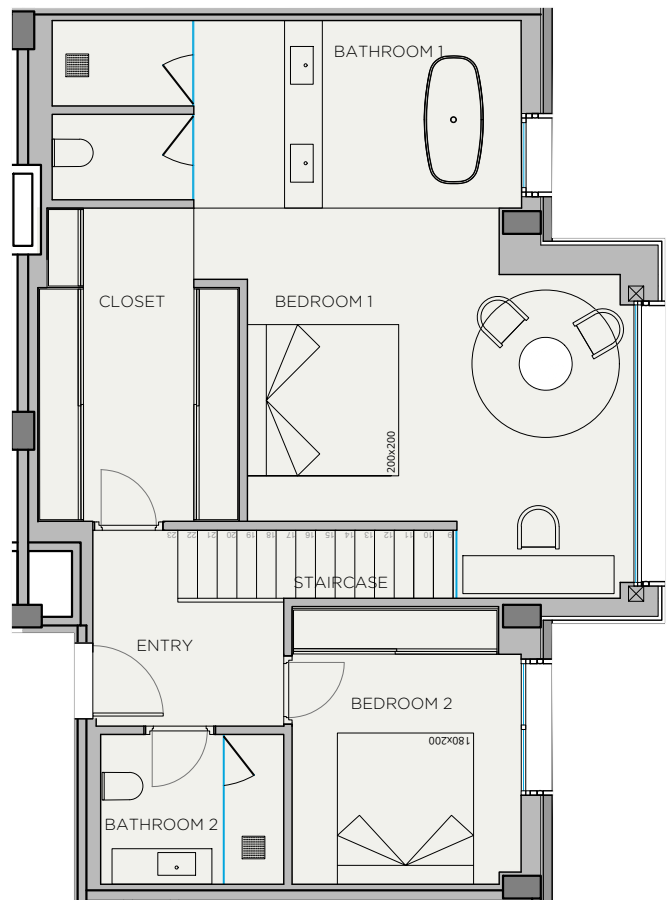


XOJAY



- KITCHEN
- WARDROBES
- SMART CONTROL
- PANORAMA WINDOWS
- SOLAR CONTROL GLASS
- COMMUNITY POOL
- COMMUNITY GYM
- SECURITY SYSTEM
- ART WALL
- BLINDS
- AC/HEATING
- (M)MOTORIZED WINDOW

* FURNITURE IS NOT INCLUDED

XOPARQ



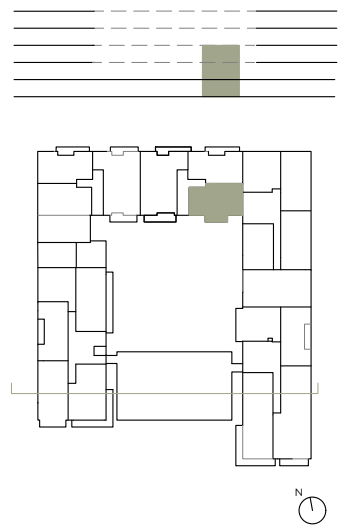
DATE: 25/04/24

*This document is informative, it has not contractual value until the structure and installations are completely defined

****MEASUREMENTS MAY CHANGE IN THE FURTHER PLANNING PHASE**

*****THIS DOCUMENT, INCLUDING USABLE AREAS AND GROSS FLOOR AREAS, IS ONLY TEMPORARY AND NOT FINAL DUE TO MUNICIPAL CHANGES AND CONSTRUCTION DESIGN**

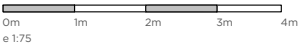
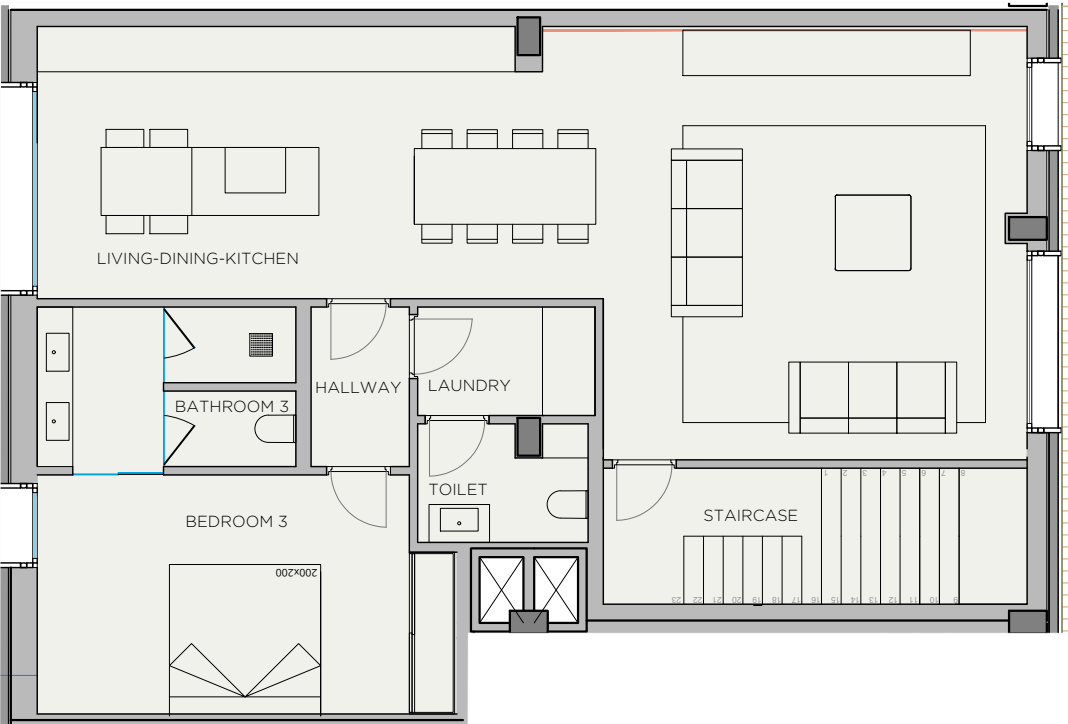
XOPARQ
The Palma Residences



V.1F APARTMENT	
INDOOR USABLE FLOOR AREA	309.00
INDOOR GROSS FLOOR AREA	360.45
GROSS FLOOR AREA	360.45
GFA + COMMON AREAS	434.56

V.1F- USABLE FLOOR AREA	
ROOM	SURFACE
FIRST FLOOR	
ENTRY	5.27
BEDROOM 1	32.85
BATHROOM 1	15.17
BEDROOM 2	10.89
BATHROOM 2	4.80
GROUND FLOOR	
LIVING-DINING_KITCHEN	58.75
HALLWAY	2.74
BEDROOM 3	16.89
BATHROOM 3	7.01
LAUNDRY	3.37
TOILET	3.37
STAIRCASE	10.09
BASEMENT	
PARKING	55.92
STORAGE 1	65.43
HALLWAY	3.37
STAIRCASE	8.98
STORAGE 2	4.09
TOTAL USABLE FLOOR AREA	309.00

APARTMENT 1F

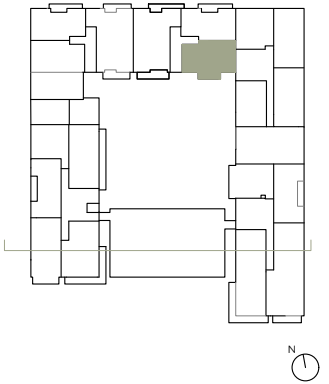
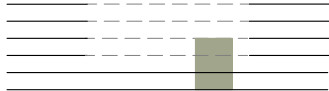


DATE: 25/04/24

*This document is informative, it has not contractual value until the structure and installations are completely defined

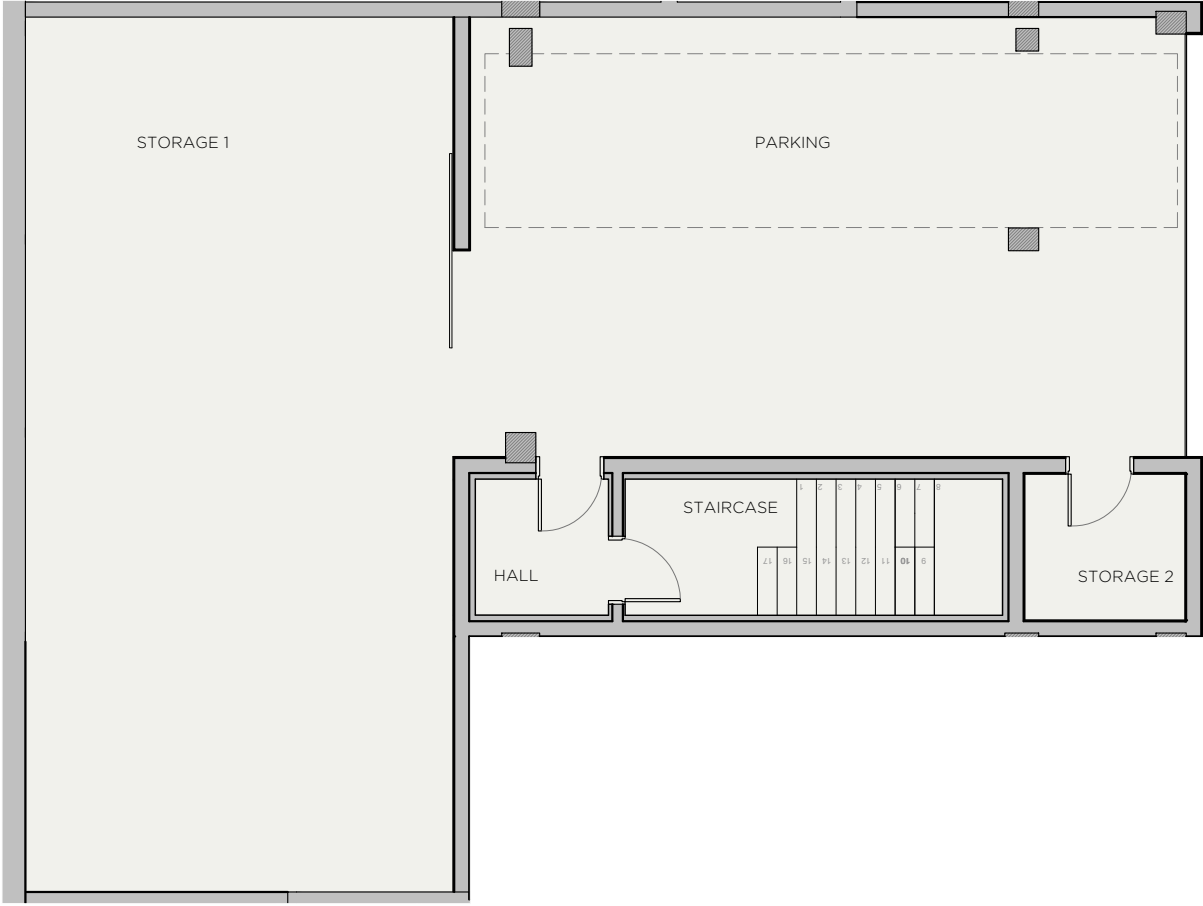
****MEASUREMENTS MAY CHANGE IN THE FURTHER PLANNING PHASE**

*****THIS DOCUMENT, INCLUDING USABLE AREAS AND GROSS FLOOR AREAS, IS ONLY TEMPORARY AND NOT FINAL DUE TO MUNICIPAL CHANGES AND CONSTRUCTION DESIGN**



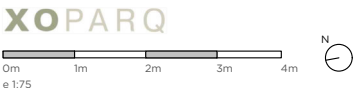
V.1F APARTMENT	
INDOOR USABLE FLOOR AREA	309.00
INDOOR GROSS FLOOR AREA	360.45
GROSS FLOOR AREA	360.45
GFA + COMMON AREAS	434.56

V.1F- USABLE FLOOR AREA	
ROOM	SURFACE
FIRST FLOOR	
ENTRY	5.27
BEDROOM 1	32.85
BATHROOM 1	15.17
BEDROOM 2	10.89
BATHROOM 2	4.80
GROUND FLOOR	
LIVING-DINING_KITCHEN	58.75
HALLWAY	2.74
BEDROOM 3	16.89
BATHROOM 3	7.01
LAUNDRY	3.37
TOILET	3.37
STAIRCASE	10.09
BASEMENT	
PARKING	55.92
STORAGE 1	65.43
HALLWAY	3.37
STAIRCASE	8.98
STORAGE 2	4.09
TOTAL USABLE FLOOR AREA	309.00

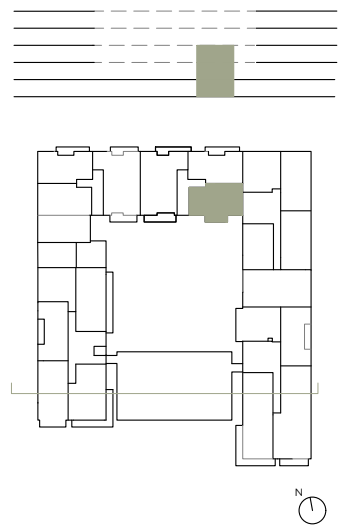


- KITCHEN
- WARDROBES
- SMART CONTROL
- PANORAMA WINDOWS
- SOLAR CONTROL GLASS
- COMMUNITY POOL
- COMMUNITY GYM
- SECURITY SYSTEM
- ART WALL
- BLINDS
- AC/HEATING
- (M) MOTORIZED WINDOW

* FURNITURE IS NOT INCLUDED



DATE: 25/04/24
*This document is informative, it has not contractual value until the structure and installations are completely defined
****MEASUREMENTS MAY CHANGE IN THE FURTHER PLANNING PHASE**
***THIS DOCUMENT, INCLUDING USABLE AREAS AND GROSS FLOOR AREAS, IS ONLY TEMPORARY AND NOT FINAL DUE TO MUNICIPALY CHANGES AND CONSTRUCTION DESIGN



V.1F APARTMENT	
INDOOR USABLE FLOOR AREA	309.00
INDOOR GROSS FLOOR AREA	360.45
GROSS FLOOR AREA	360.45
GFA + COMMON AREAS	434.56

V.1F- USABLE FLOOR AREA	
ROOM	SURFACE
FIRST FLOOR	
ENTRY	5.27
BEDROOM 1	32.85
BATHROOM 1	15.17
BEDROOM 2	10.89
BATHROOM 2	4.80
GROUND FLOOR	
LIVING-DINING_KITCHEN	58.75
HALLWAY	2.74
BEDROOM 3	16.89
BATHROOM 3	7.01
LAUNDRY	3.37
TOILET	3.37
STAIRCASE	10.09
BASEMENT	
PARKING	55.92
STORAGE 1	65.43
HALLWAY	3.37
STAIRCASE	8.98
STORAGE 2	4.09
TOTAL USABLE FLOOR AREA	309.00