



5½ - 6½ Zimmer Einfamilienhaus



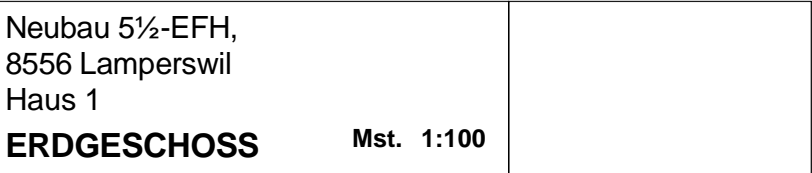
8556 Lamperswil Neuweg

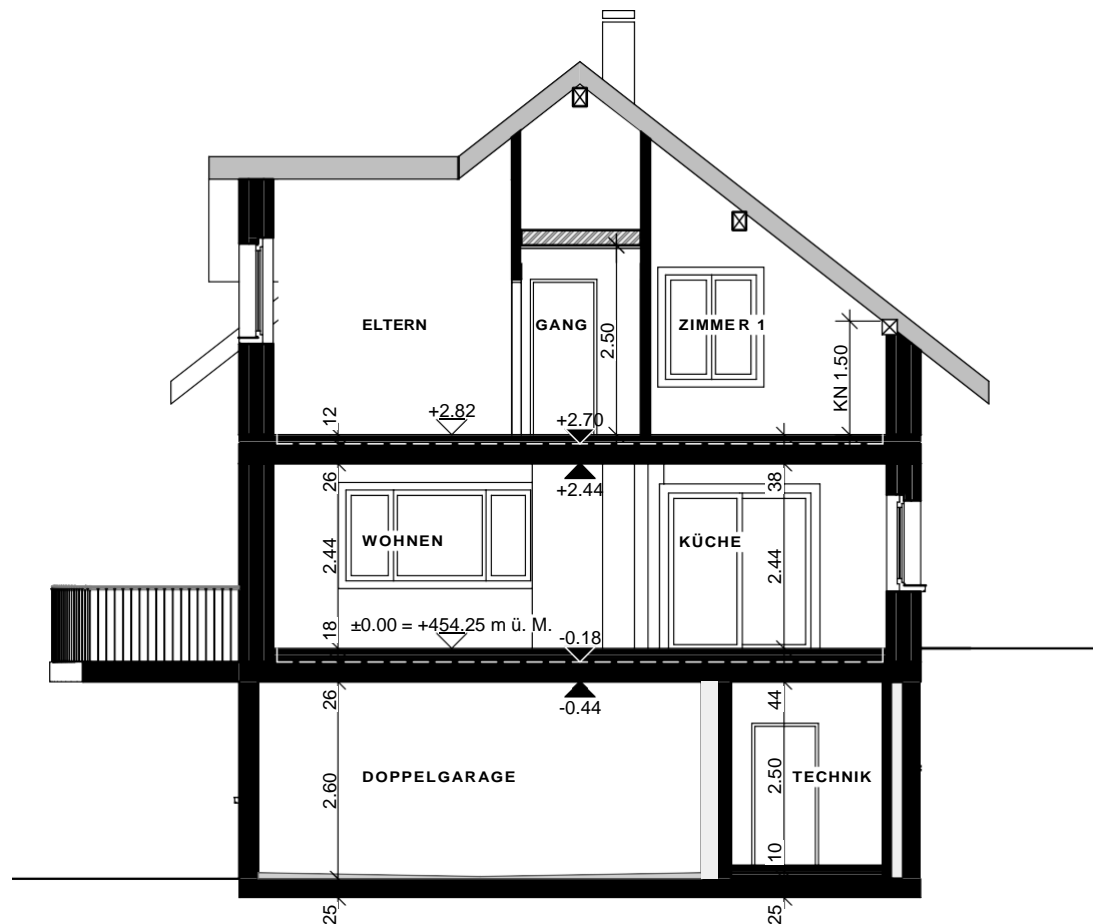
Haus 1

Architectural floor plan of the ground floor (Untergeschoss) of a 5 1/2-story detached house. The plan shows a double garage (Doppelgarage) with a floor area of 35.13 m², two cellars (Keller) with floor areas of 5.58 m² and 11.75 m², a technical room (Technik) with a floor area of 8.71 m², and a hallway (Gang) with a floor area of 15.28 m². The plan also includes a staircase, a bathroom (BA), a living area (LWP), and a garden (GARD). The overall dimensions are 11.50 m by 9.00 m. The plan is labeled 'Neubau 5 1/2-EFH, 8556 Lamperswil Haus 1' and 'Mst. 1:100'.

Mst. 1:100

Verbund-/ oder
Sickersteine

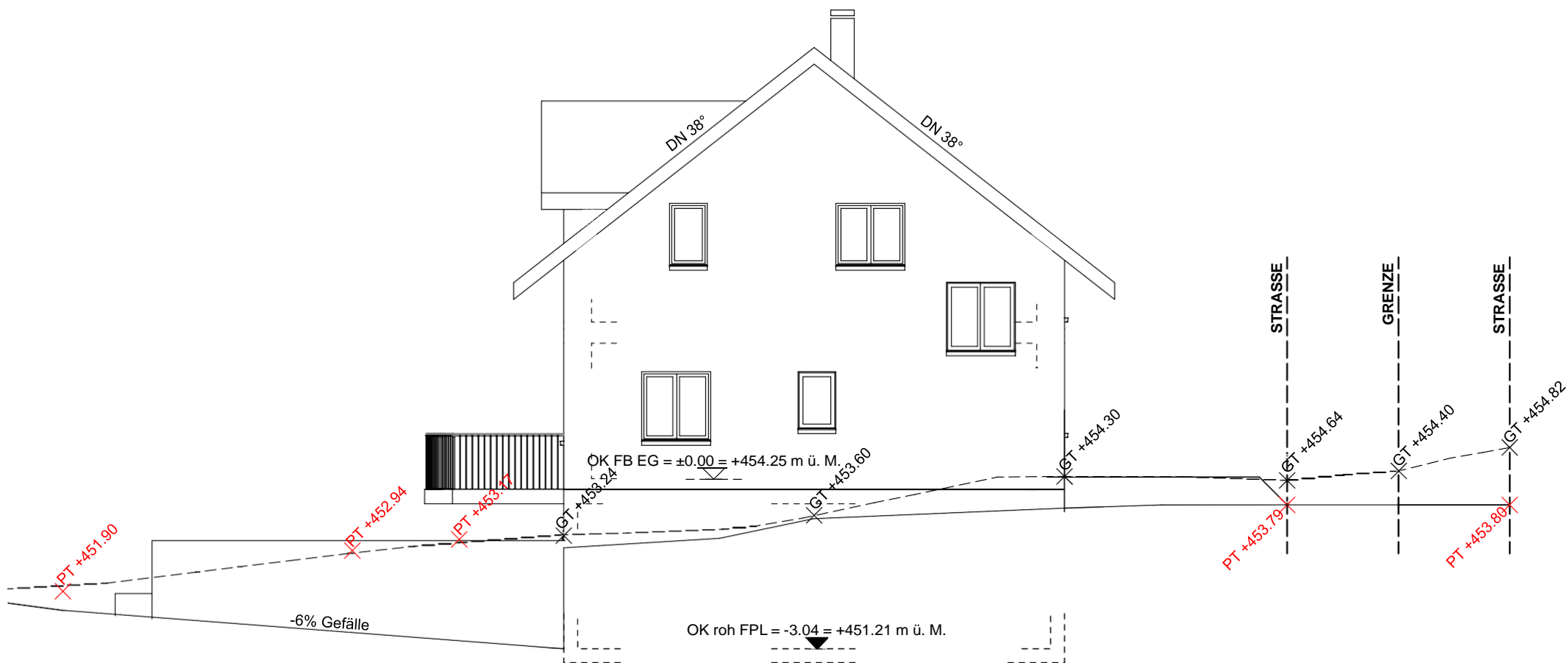




Neubau 5½-EFH,
8556 Lamperswil
Haus 1

QUERSCHNITT

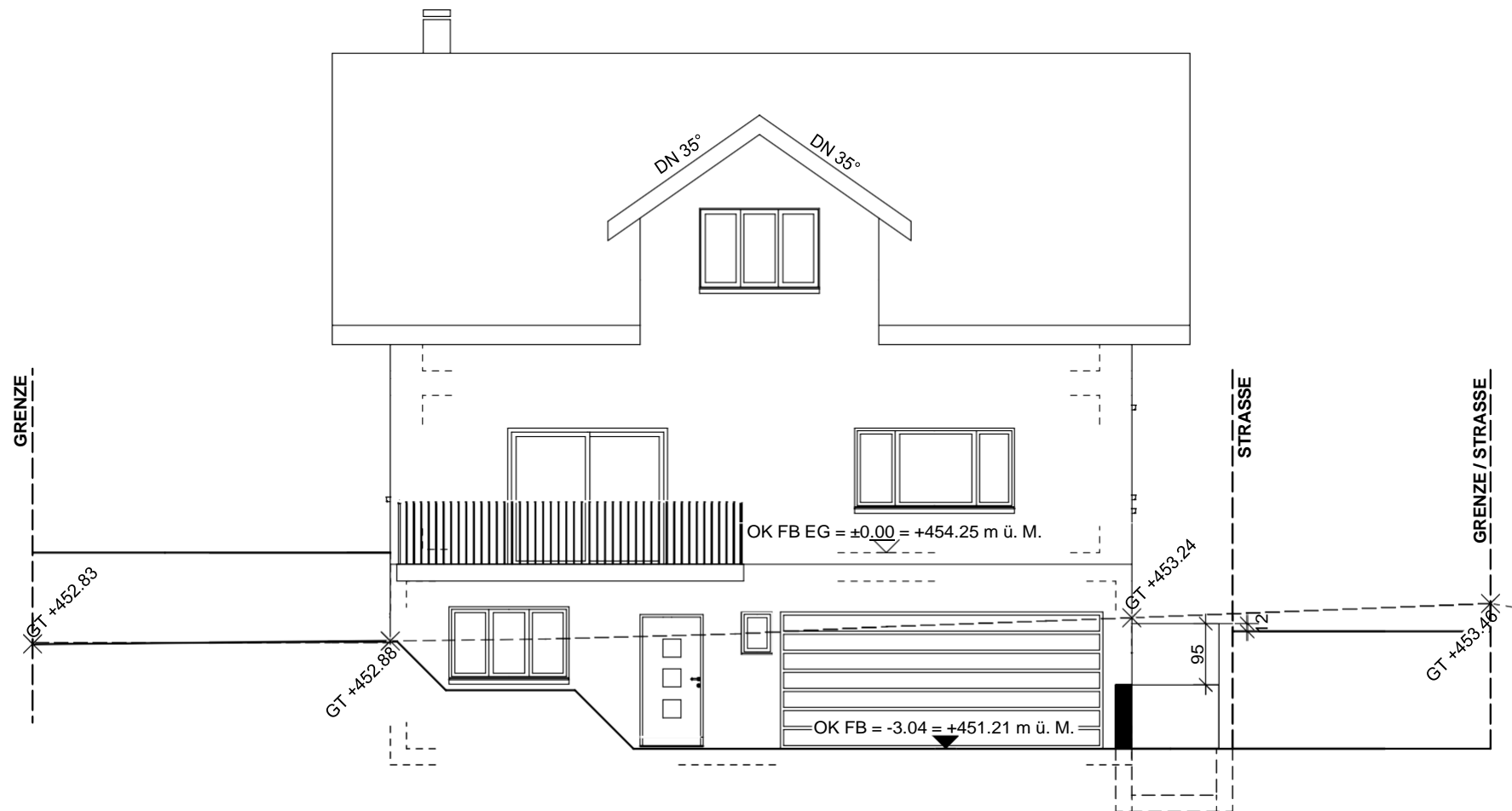
Mst. 1:100



Neubau 5½-EFH,
8556 Lamperswil
Haus 1

OSTFASSADE

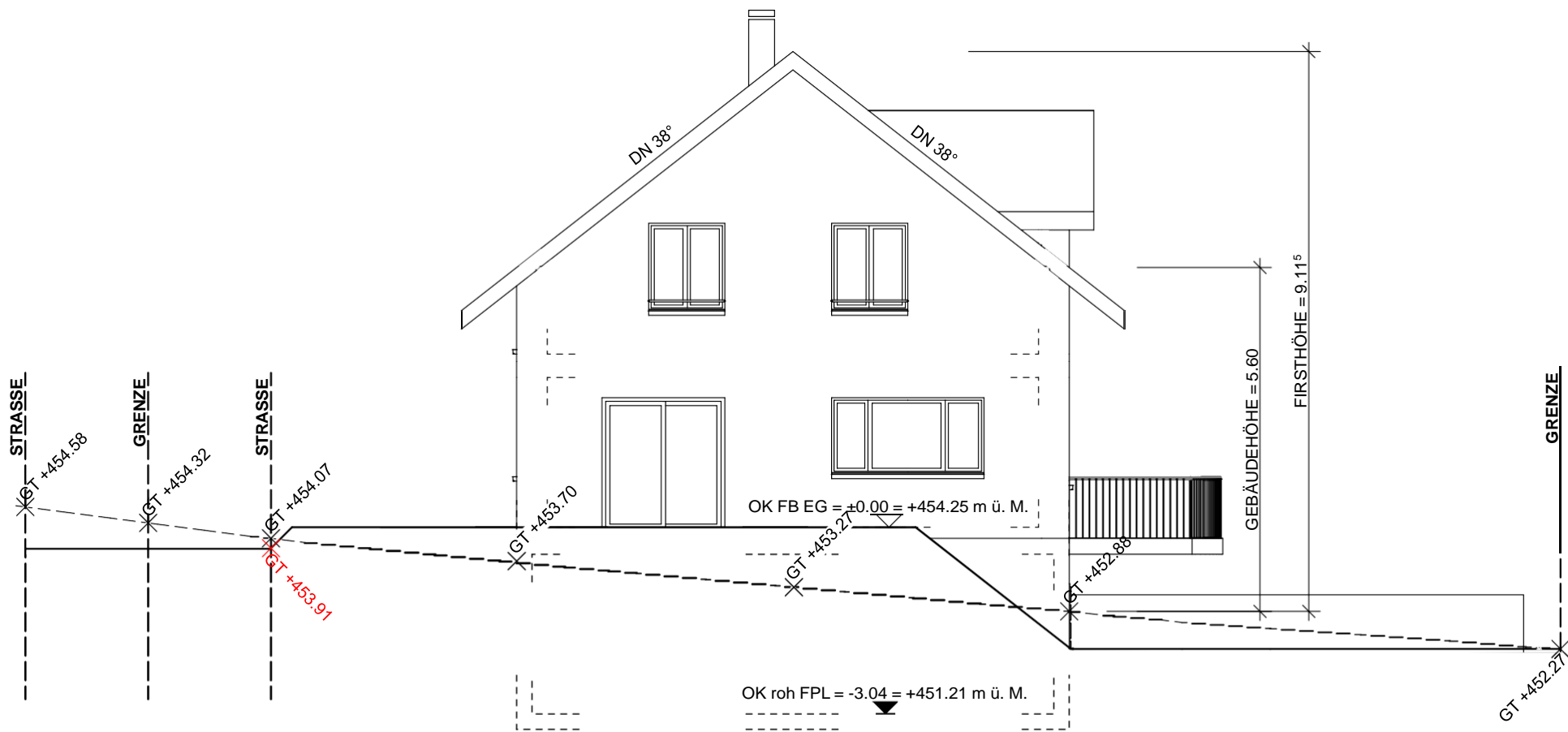
Mst. 1:100



Neubau 5½-EFH,
8556 Lamperswil
Haus 1

SÜDFASSADE

Mst. 1:100



Neubau 5½-EFH,
8556 Lamperswil
Haus 1

WESTFASSADE

Mst. 1:100